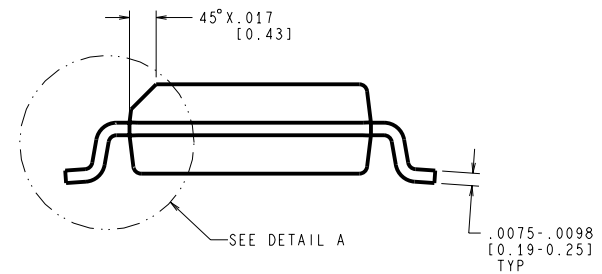
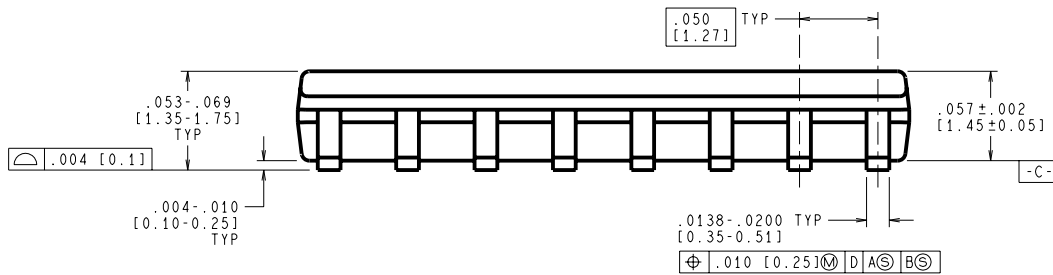
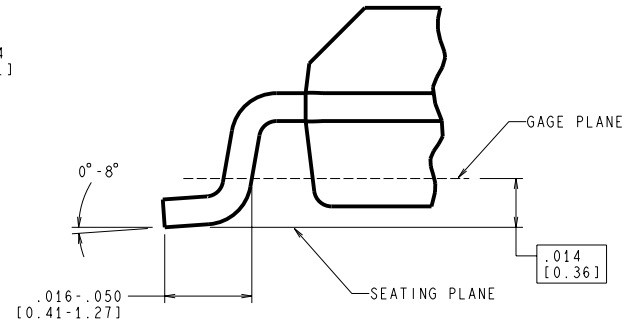
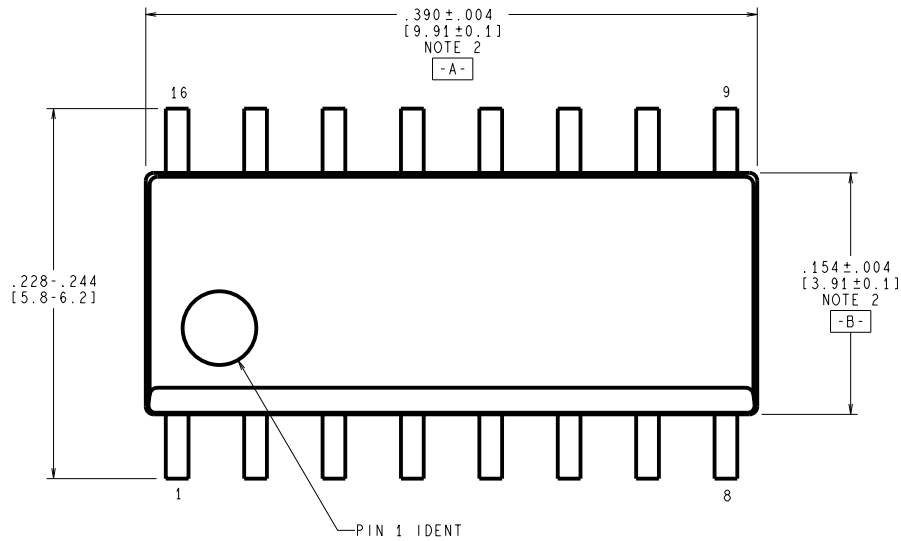


REVISIONS				
LTR	DESCRIPTION	E.C.N.	DATE	BY/APP'D
J	CHGE LD SHAPE FROM TAPER TO SQUARE; REVISE PER CURRENT STD.; REDRAW	11069	08/29/95	TL/



CONTROLLING DIMENSION IS INCH
VALUES IN [] ARE MILLIMETERS

NOTES: UNLESS OTHERWISE SPECIFIED

- STANDARD LEAD FINISH TO BE 200 MICROINCHES/ 5.08 MICROMETERS MINIMUM LEAD/TIN(SOLDER) ON COPPER.
- DIMENSION DOES NOT INCLUDE MOLD FLASH.
- REFERENCE JEDEC REGISTRATION MS-012, VARIATION AC, DATED MAY 1990.

APPROVALS	DATE	National Semiconductor		
DRAWN T. LEQUANG	08/29/95	2900 Semiconductor dr., Santa Clara, CA 95052-8090		
DTG. CHK.		MOLDED PACKAGE, SO, .150 WIDE, 16 LEAD		
ENGR. CHK.				
PROJECTION		SCALE	SIZE	DRAWING NUMBER
INCH [MM]		N/A	C	MKT-M16A
		DO NOT SCALE DRAWING		REV J
		SHEET 1 of 1		